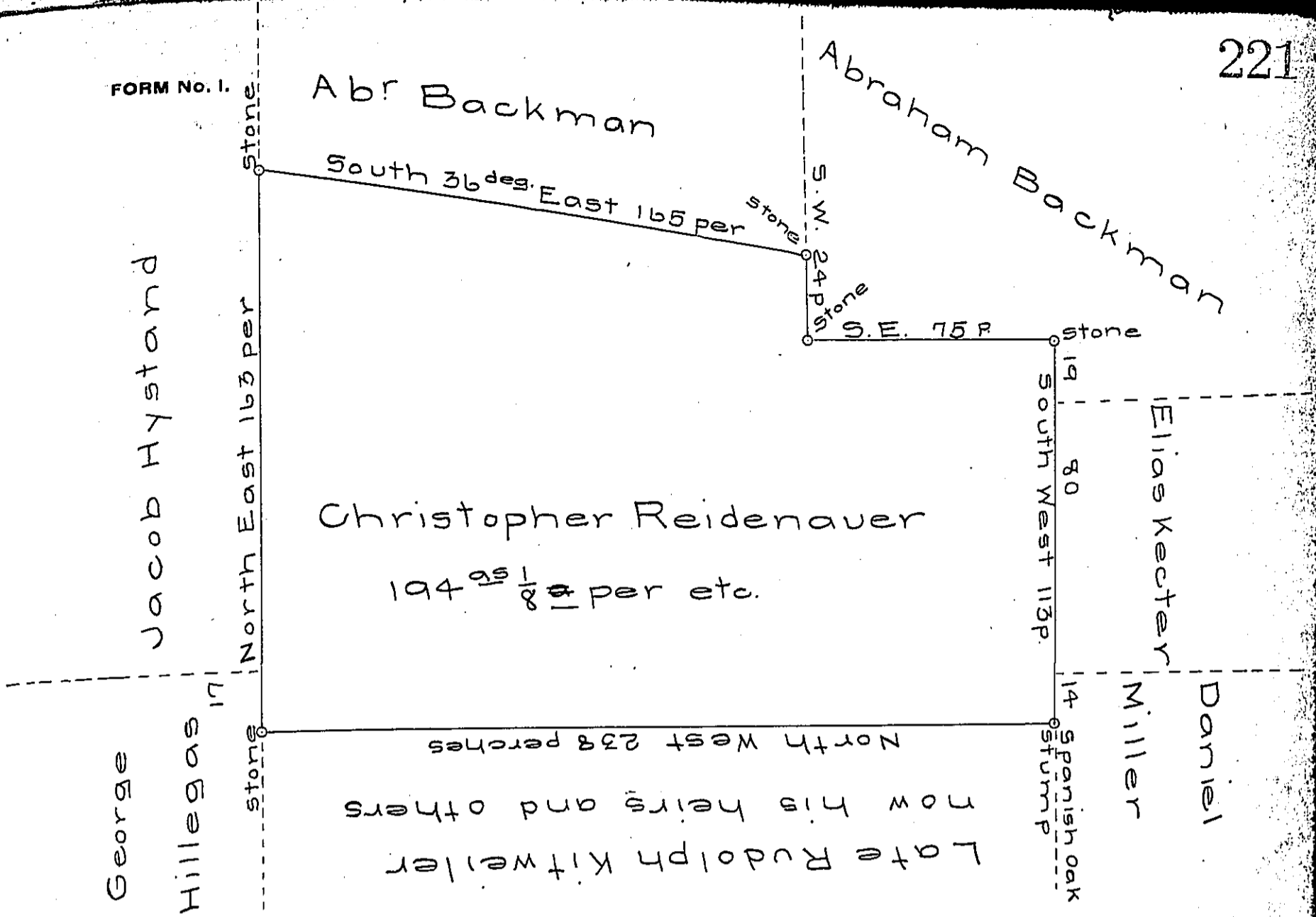


FORM No. 1.



A draught of a tract of land, situate in Milford township in the County of Bucks, in the State of Pennsylvania, containing one hundred and ninety four acres and 20 perches of land together with the usual allowance at six per cent for roads. That was surveyed to Christopher Reidenauer, by virtue of a warrant granted to him by this Commonwealth dated on the seventh day of July Anno 1788 and surveyed on the first day of August in the same year 1788. By order of the Surveyor General.

David Shultz

IN TESTIMONY that the above is a copy of the original remaining on file in the Department of Internal Affairs of Pennsylvania, made conformably to an Act of Assembly approved the 16th day of February, 1833, I have hereunto set my Hand and caused the Seal of said Department to be affixed at Harrisburg, this fourteenth day of June 1906.

David R. Purvill
Secretary of Internal Affairs.